

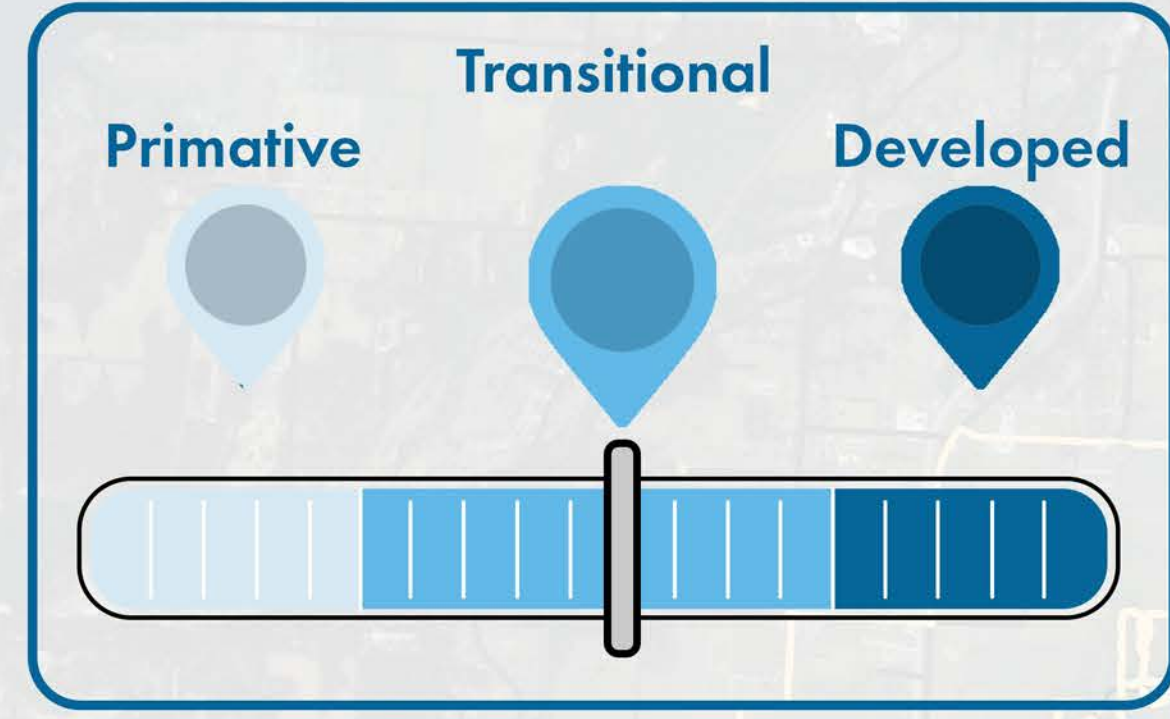
HOW THE RAPID FIELD ASSESSMENT WORKS

Use a standard set of attributes, indicators, and rating system to measure existing conditions.

Travel to each inventory site.

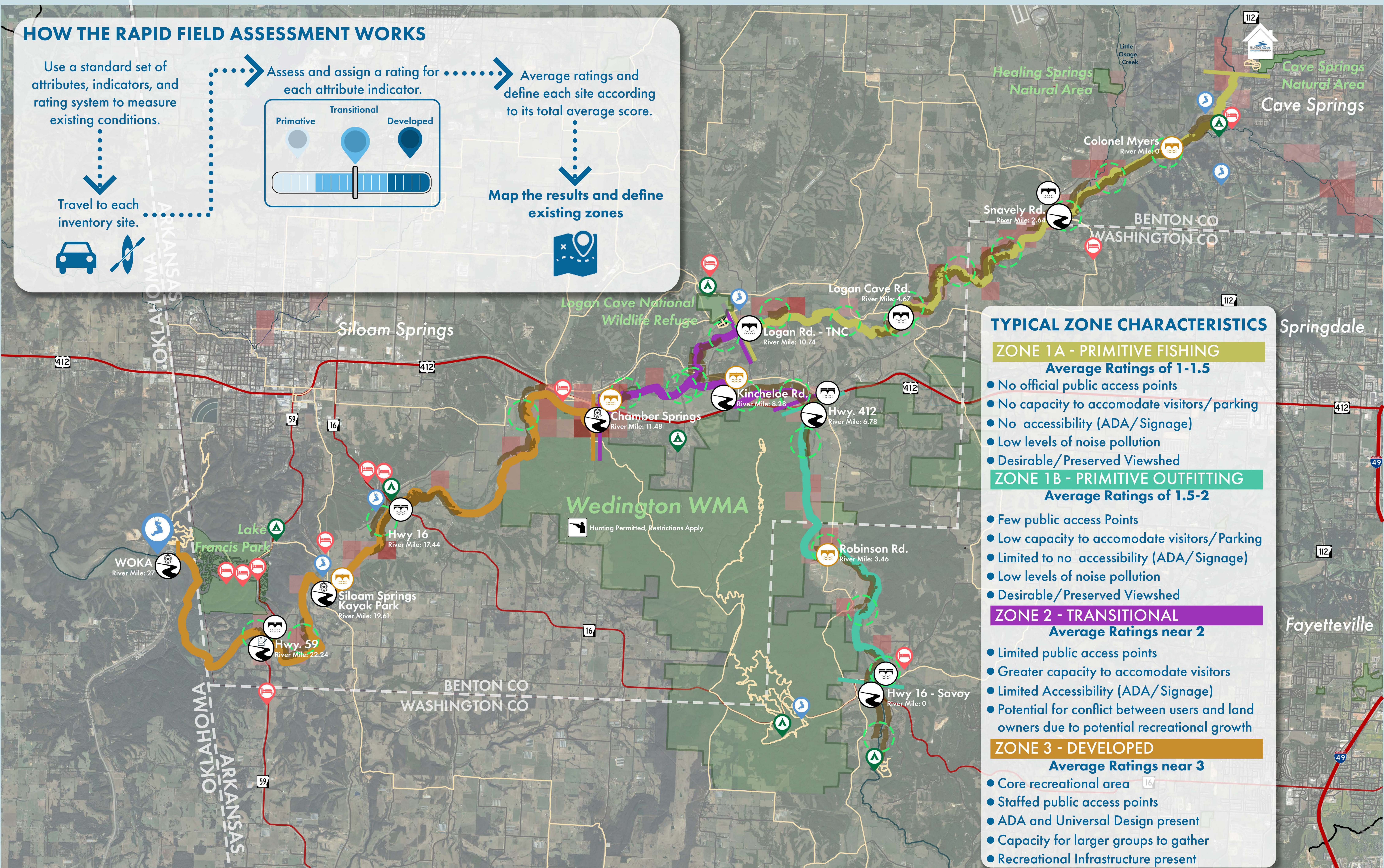


Assess and assign a rating for each attribute indicator.



Average ratings and define each site according to its total average score.

Map the results and define existing zones



TYPICAL ZONE CHARACTERISTICS

ZONE 1A - PRIMITIVE FISHING
Average Ratings of 1-1.5

- No official public access points
- No capacity to accommodate visitors/parking
- No accessibility (ADA/Signage)
- Low levels of noise pollution
- Desirable/Preserved Viewshed

ZONE 1B - PRIMITIVE OUTFITTING
Average Ratings of 1.5-2

- Few public access points
- Low capacity to accommodate visitors/Parking
- Limited to no accessibility (ADA/Signage)
- Low levels of noise pollution
- Desirable/Preserved Viewshed

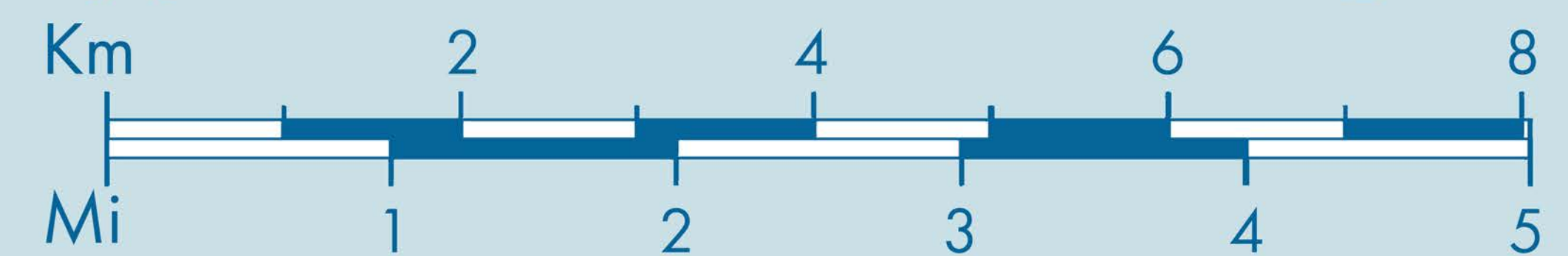
ZONE 2 - TRANSITIONAL
Average Ratings near 2

- Limited public access points
- Greater capacity to accommodate visitors
- Limited Accessibility (ADA/Signage)
- Potential for conflict between users and land owners due to potential recreational growth

ZONE 3 - DEVELOPED
Average Ratings near 3

- Core recreational area
- Staffed public access points
- ADA and Universal Design present
- Capacity for larger groups to gather
- Recreational Infrastructure present

Recreation Inventory Map Upper Illinois River - Osage Creek

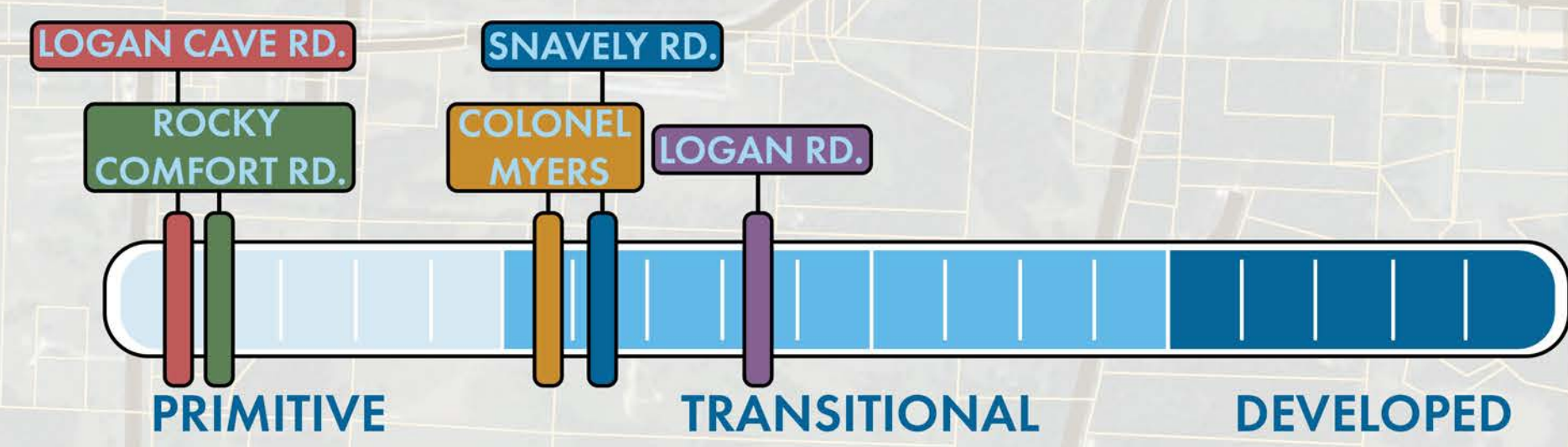


Legend	Managerial Attributes	Accommodations	Archeological Sites	Restoration Opportunities
Existing Trails	Official Use Public Access	Primitive and RV Campgrounds	1 Site within Boundary	High Erosion/Land Loss
Natural Refuge Areas	Planned Official Public Access	Lodging Rentals	2 Sites within Boundary	Unprotected River Bank Buffers
IRWP Sanctuary	Informal Use Public Access	Recreation & Tourism Asset	3 Sites within Boundary	
	Bridge Crossing		4 Sites within Boundary	
	Historic Bridge Crossing		5 Sites within Boundary	

ZONE 1A - PRIMITIVE FISHING | RAPID ASSESSMENT

PHYSICAL ATTRIBUTES

KEY INDICATORS



OFF-TRAIL DISTURBANCE



BOAT RAMP ACCESS

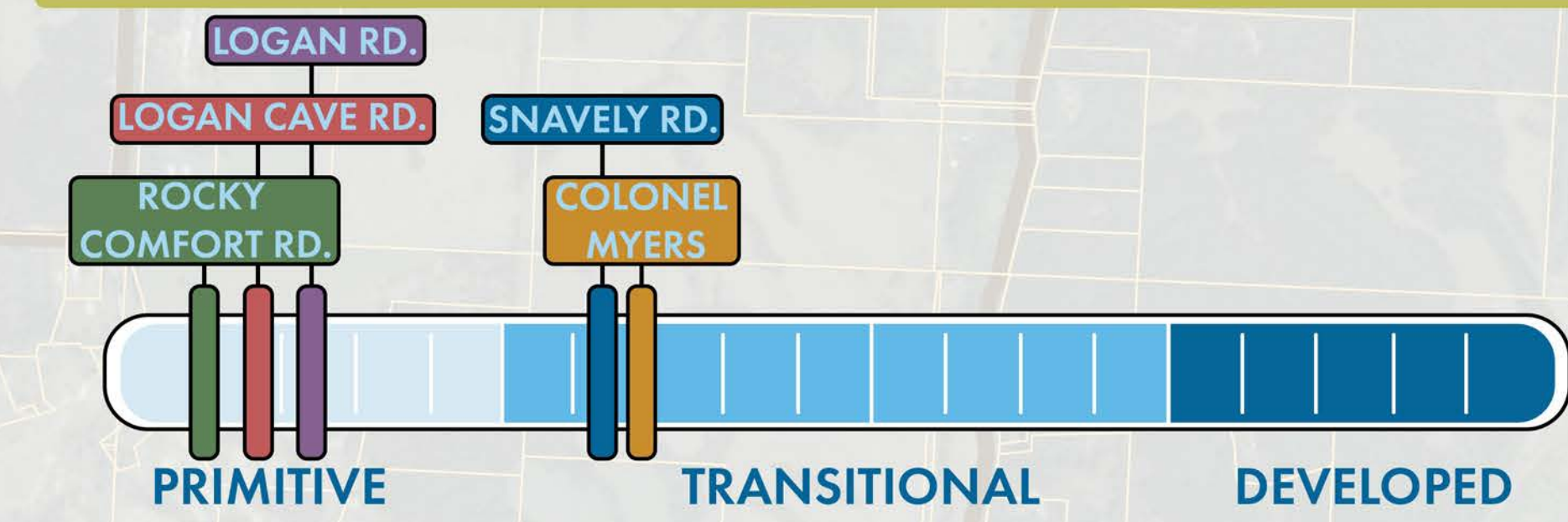


EXPERIENTIAL ATTRIBUTES

ACCESSIBILITY



PERSONS AT ONE TIME

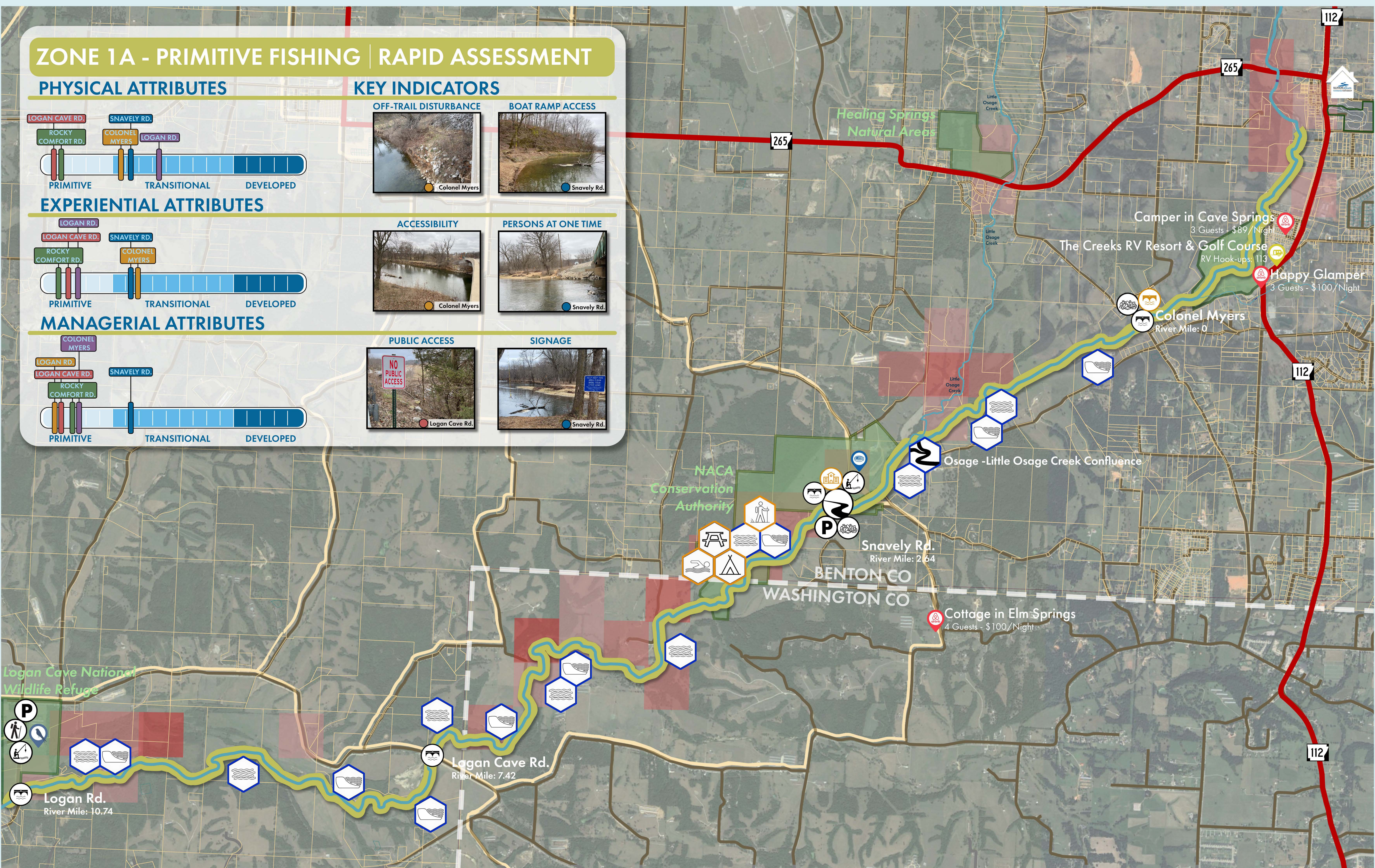


MANAGERIAL ATTRIBUTES

PUBLIC ACCESS

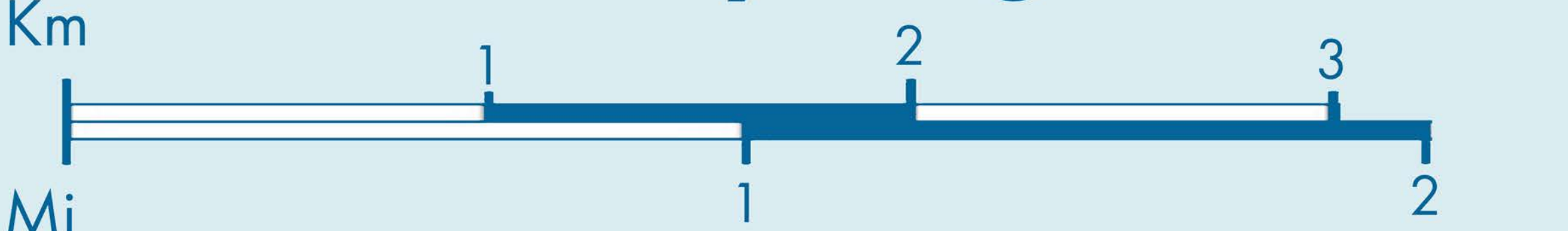


SIGNAGE



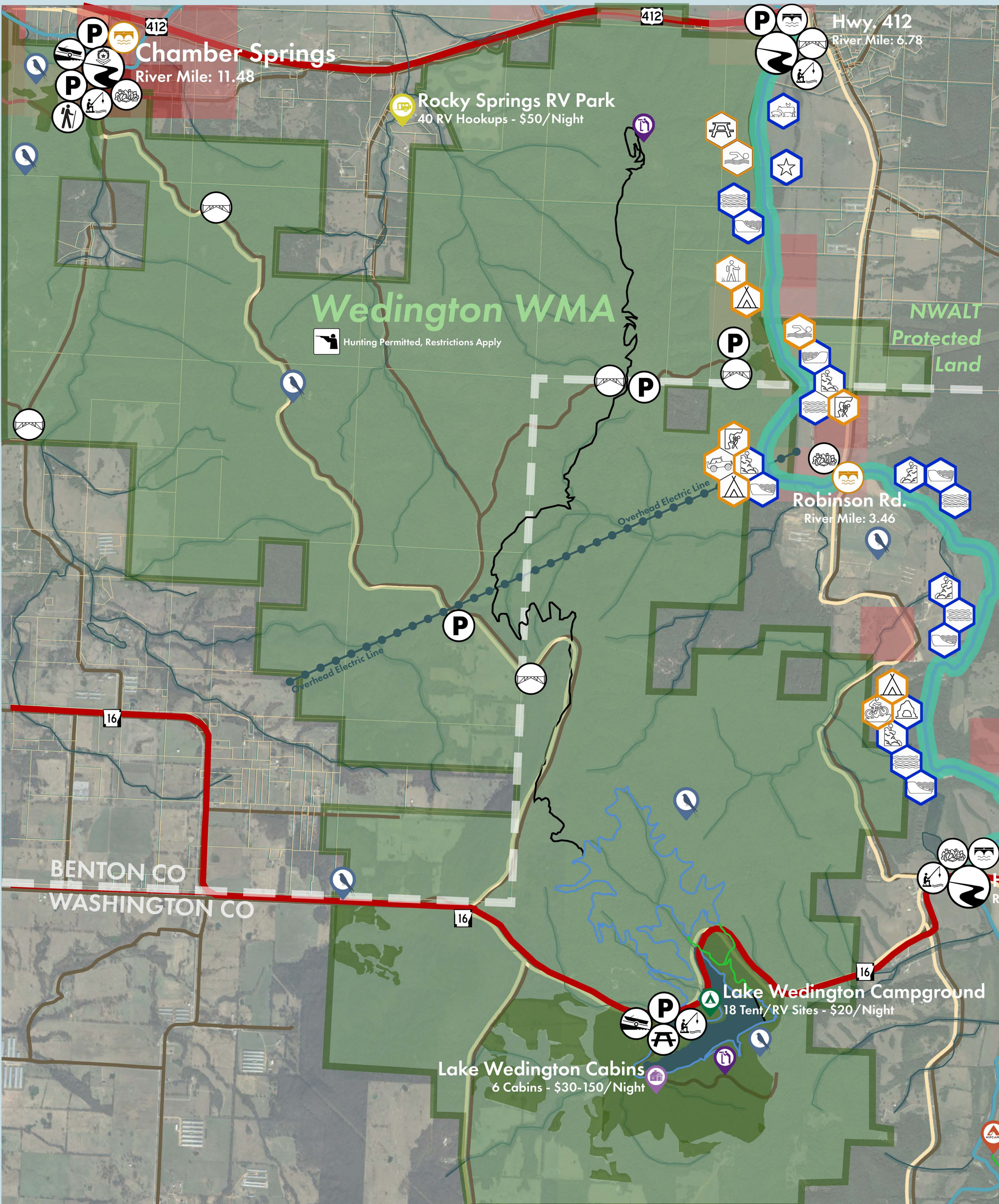
Recreation Inventory Map

IRWP Sanctuary - Logan Rd.

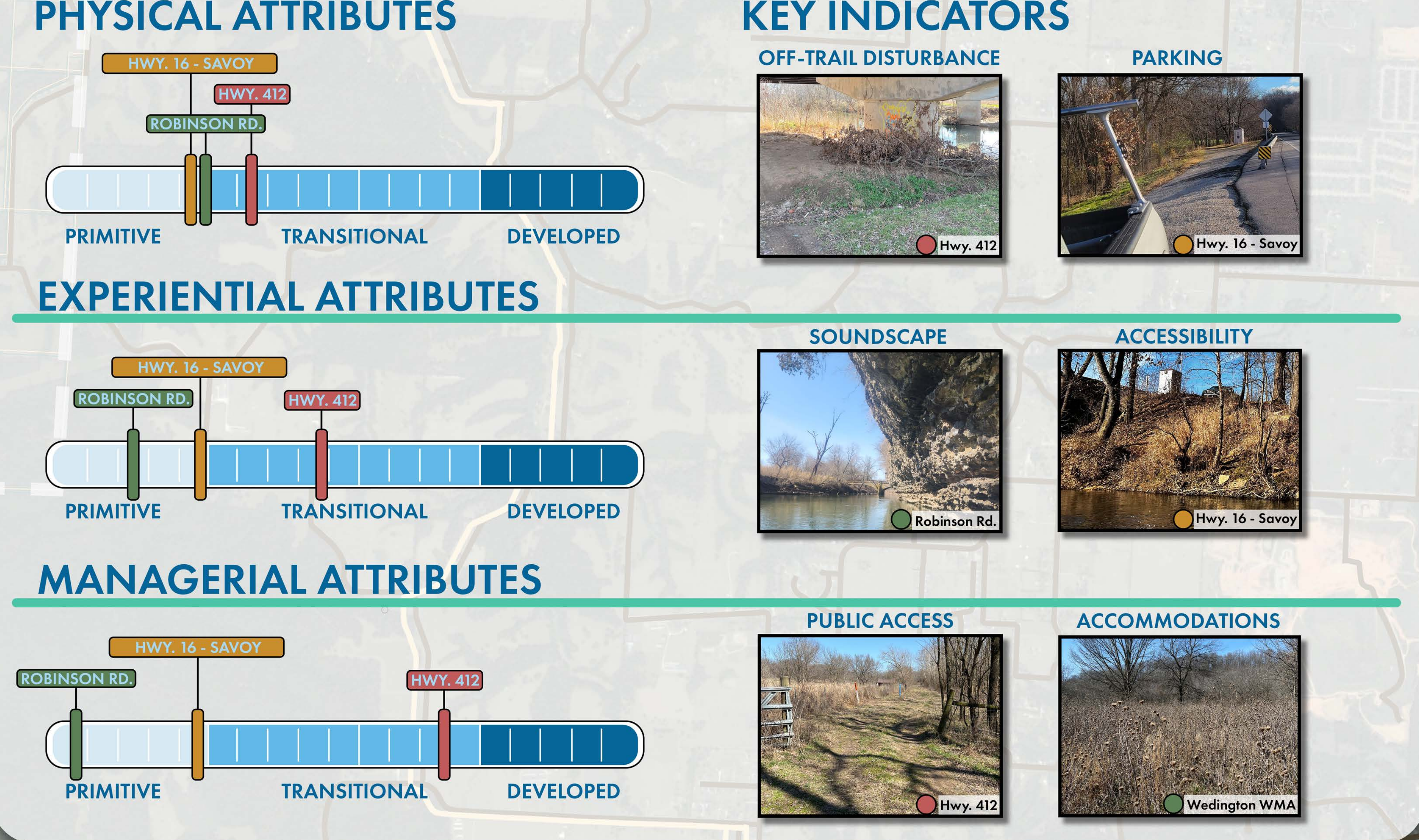


Legend

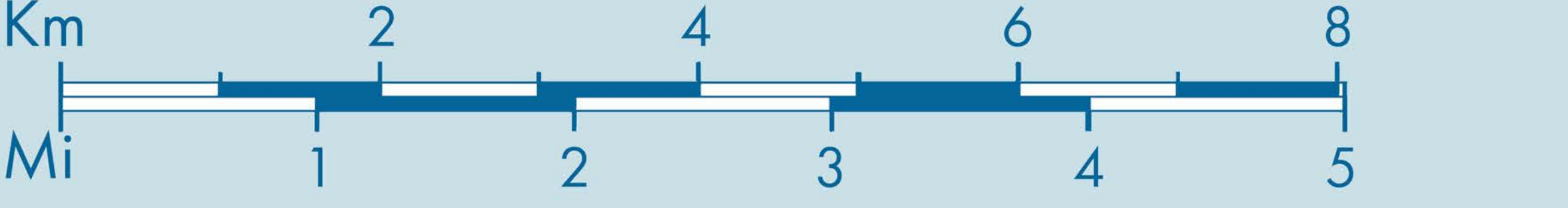
Physical Attributes	Experiential Attributes	Managerial Attributes	Accommodations	Archeological Sites	Physical Attributes	Opportunity Indicators
Rural Recreational, >200 mi. Roads	Parking	Informal Use Public Access	RV Campgrounds	1 Site within Boundary	Gravel Bar	Hiking Potential/Trails
White Difficulty Trails	Historic Structure	IRWP Sanctuary	AirBnB/Private Lodging	2 Sites within Boundary	Water Rapids	Camping Potential
Lake Keith Trails, 2 mi.	Historic Bridge	NACA Water Treatment		3 Sites within Boundary	Stream Confluence	Picnicking Potential
Trail Access	Bank Fishing			4 Sites within Boundary		Swimming Potential
	Ebird Wildlife Hotspots			5 Sites within Boundary		



ZONE 1B - PRIMITIVE OUTFITTING | RAPID ASSESSMENT



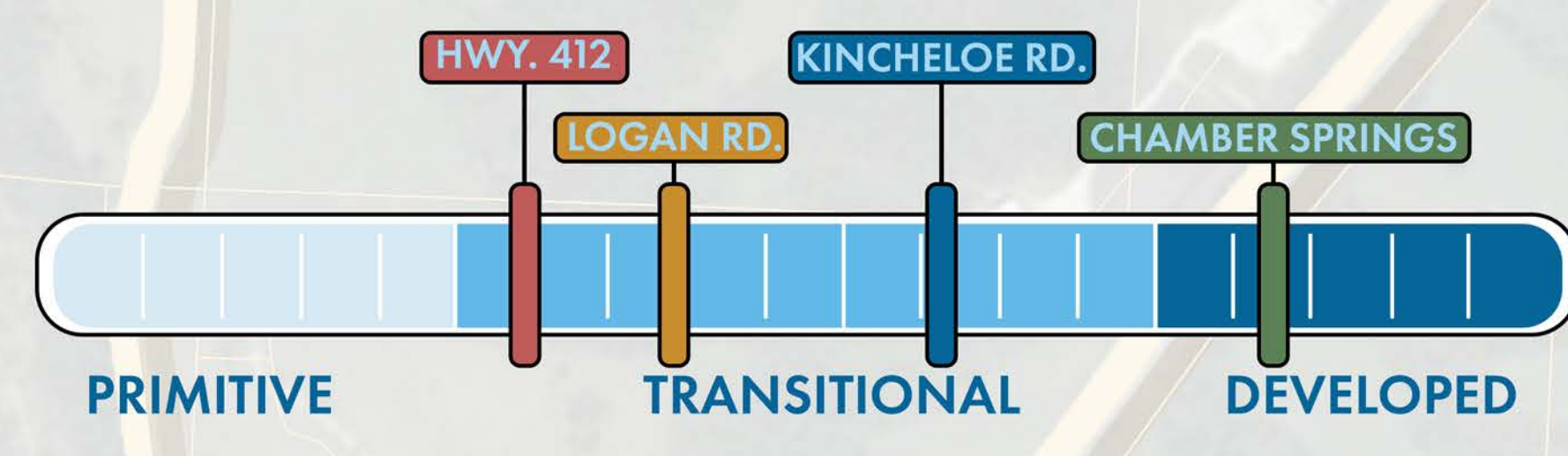
Recreation Inventory Map Hwy 16-Savoy - Hwy 412



Legend	Physical Attributes	Experiential Attributes	Managerial Attributes	Accommodations	Archeological Sites	Physical Conditions	Opportunity Indicators
Rural Recreational, >200 mi. Roads	Parking	Ebird Wildlife Hotspots	Official Use Public Access	Hipcamp/Private Campsites	1 Site within Boundary	Farm Odor	Swimming Potential
Private OHV Trails	Picnic Area	Scenic Overlook	Informal Use Public Access	AirBnB/Private Lodging	2 Sites within Boundary	Public Open Space	Hiking Potential/Trails
Green Difficulty Trails	Bridge Crossing	Litter Present	Gated Access	Public Cabin Rentals	3 Sites within Boundary	Cave	OHV Use/Potential
Feral Hog, .31 mi.	Boat Ramp	Bank Fishing		Primitive Campgrounds	4 Sites within Boundary	Gravel Bar	Climbing Potential
Crisscross, .56 mi.	Trail Access	Historic Bridge		RV Campgrounds	5 Sites within Boundary	Rocky Bluff	Camping Potential
Blue Difficulty Trails						Water Rapids	Picnicking Potential
Wiggins Way, 2 mi.							
Lakeside Trail, 1.4 mi.							
Western Don, 6 mi.							
Black Difficulty Trails							
Twin Knobs, 7.68 mi.							

ZONE 2 - TRANSITIONAL | RAPID ASSESSMENT

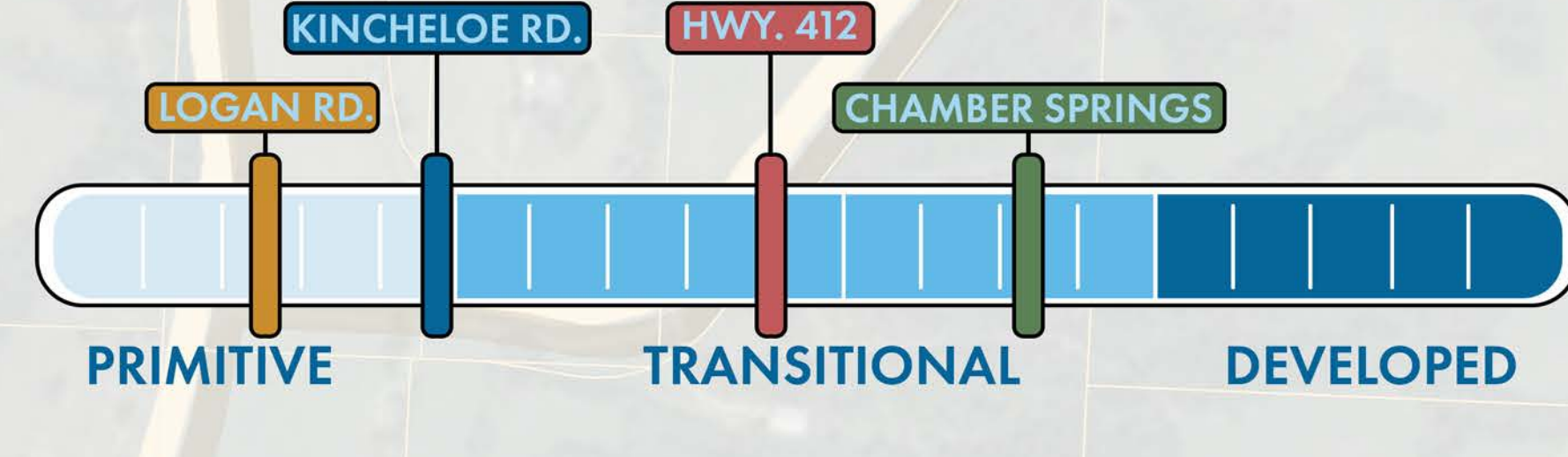
PHYSICAL ATTRIBUTES



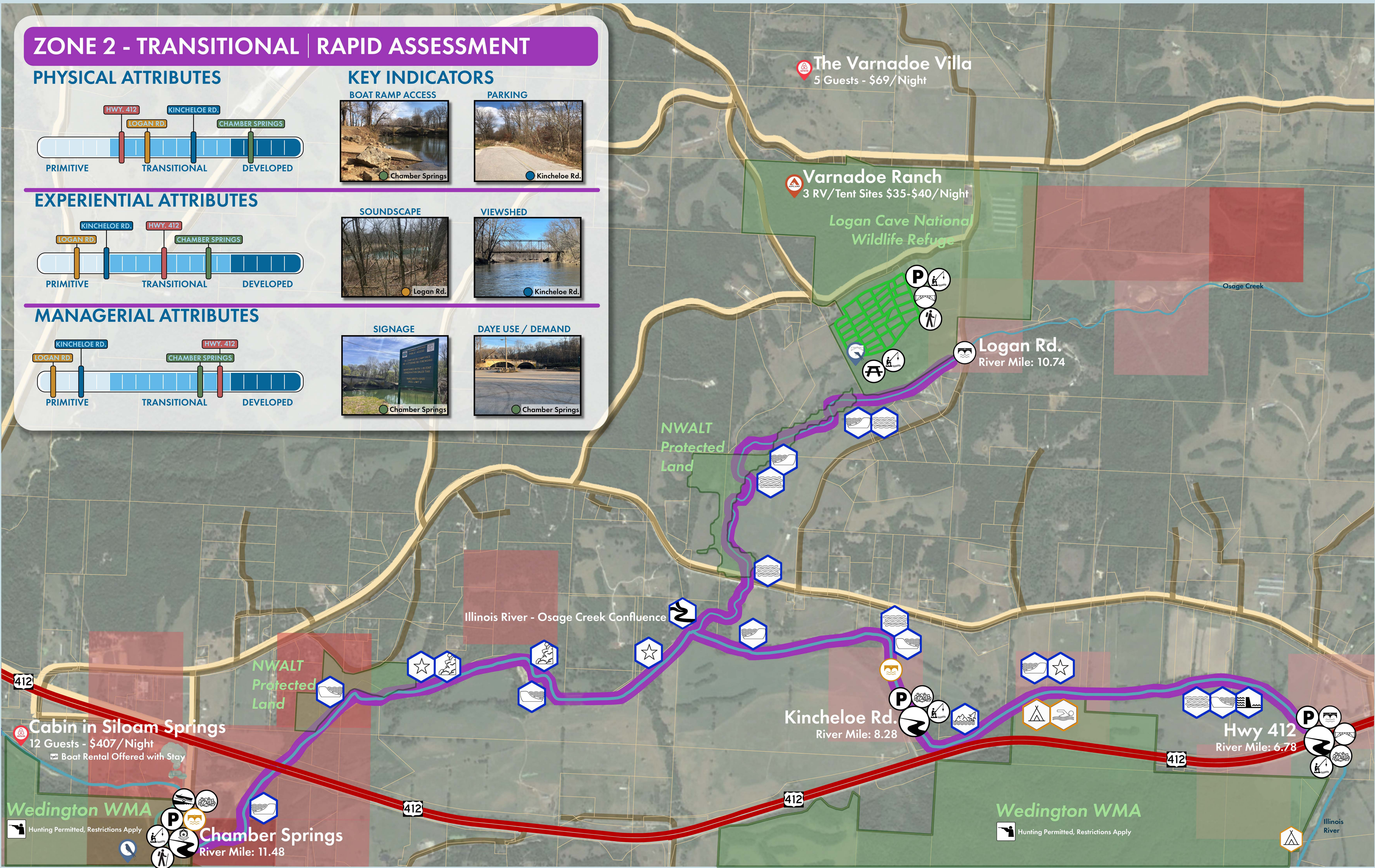
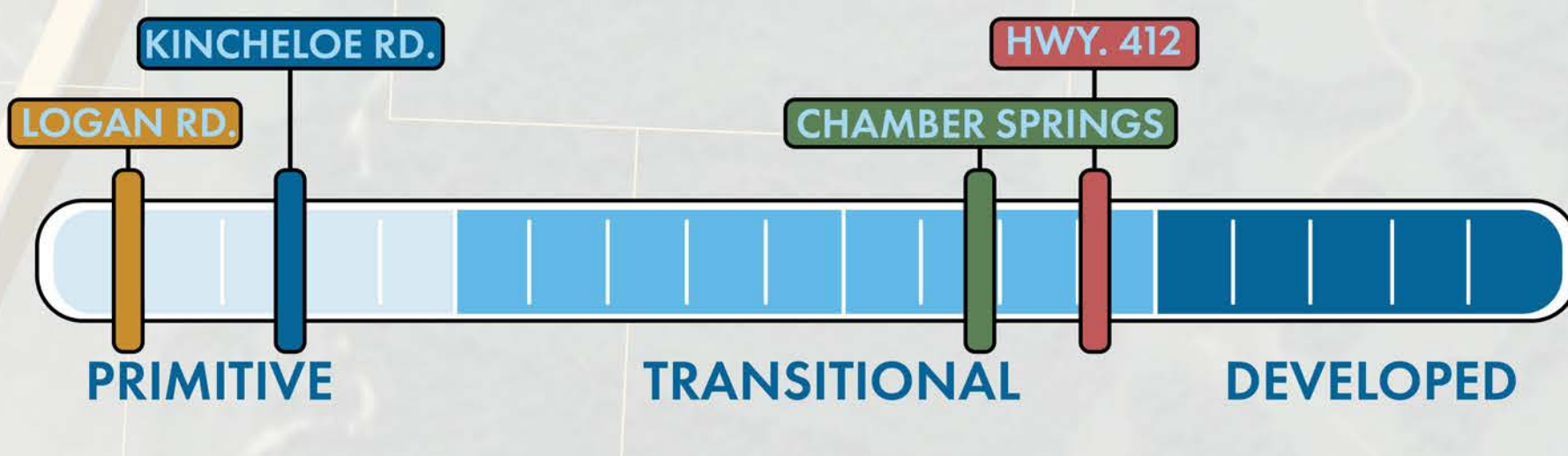
KEY INDICATORS

BOAT RAMP ACCESS Chamber Springs	PARKING Kincheloe Rd.
SOUNDSCAPE Logan Rd.	VIEWSHED Kincheloe Rd.
SIGNAGE Chamber Springs	DAYE USE / DEMAND Chamber Springs

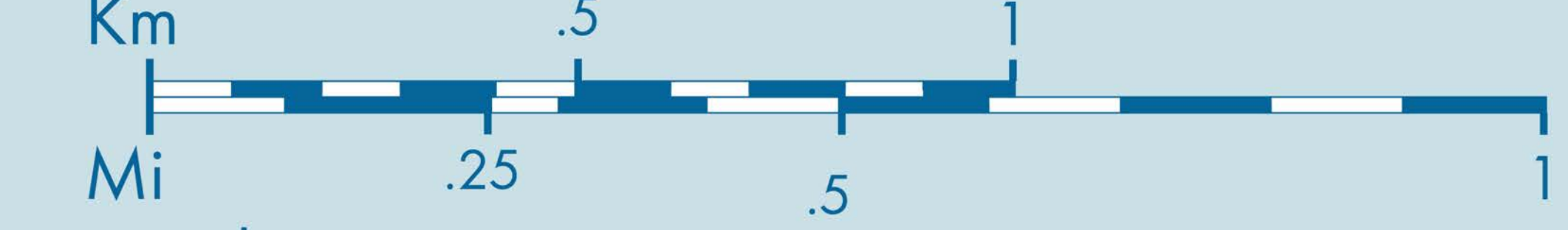
EXPERIENTIAL ATTRIBUTES



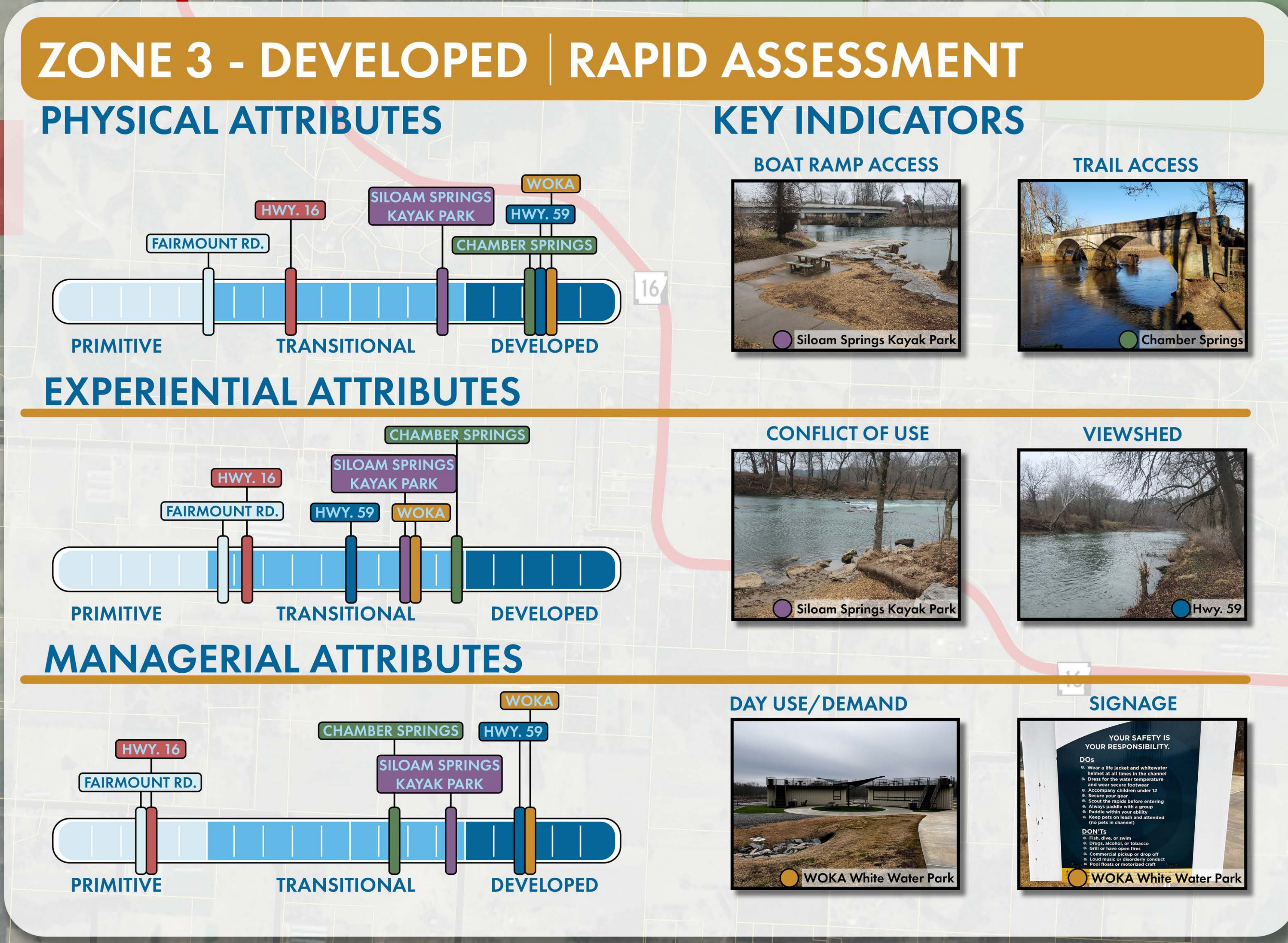
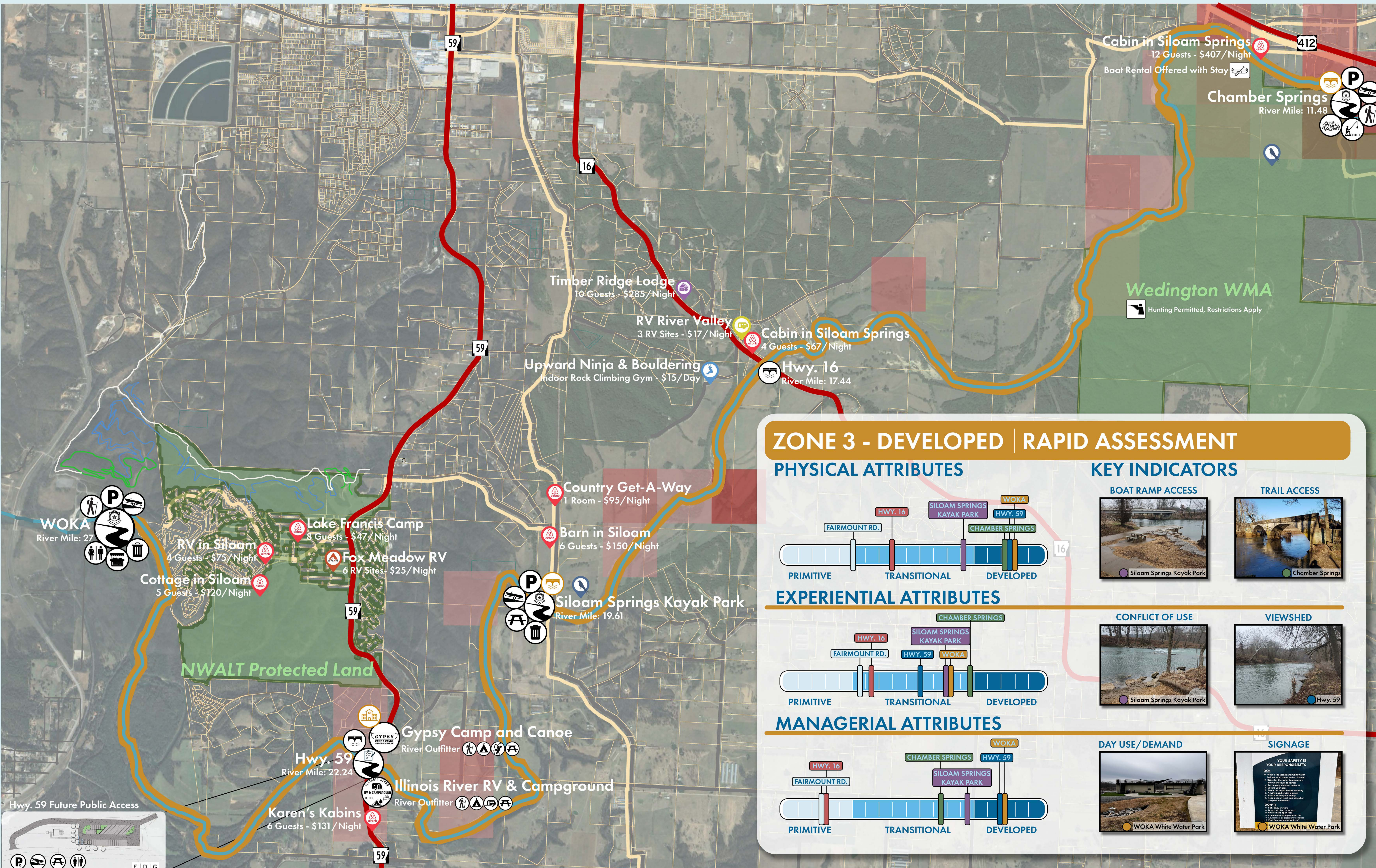
MANAGERIAL ATTRIBUTES



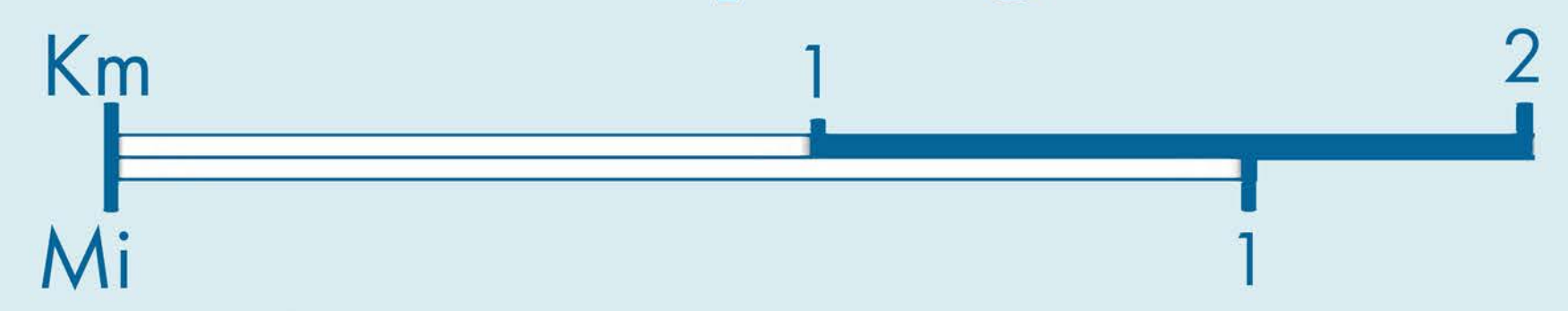
Recreation Inventory Map Logan Rd - Chamber Springs



Legend	Physical Attributes	Experiential Attributes	Managerial Attributes	Accommodations	Archeological Sites	Physical Conditions	Opportunity Indicators
Rural Recreational, >200 mi. Roads	Bridge Crossing	Ebird Wildlife Hotspots	Official Use Public Access	Hipcamp/Private Campsites	1 Site within Boundary	Stream Confluence	Hiking Potential
Green Difficulty Trails	Picnic Area	Litter Present	Informal Use Public Access	AirBnB/Private Lodging	2 Sites within Boundary	Private Use Indicator	Camping Potential
Logan Preserve, 2 mi.	Boat Ramp	Bank Fishing	Gated Access		3 Sites within Boundary	Low Water Crossing	Swimming Potential
	Parking				4 Sites within Boundary	Gravel Bar	
					5 Sites within Boundary	Rocky Bluff	
						Water Rapids	



Recreation Inventory Map Chamber Springs - WOKA



Legend

- Rural
- Recreational, >200 mi. Roads
- White Difficulty Trails
 - WOKA Trail, 3 mi.
 - Lake Francis, 2 mi.
- Green Difficulty Trails
 - Western Sling, 1 mi.
 - Short Leaf, 1 mi.
 - Forest Park, .54 mi.
- Blue Difficulty Trails
 - Tulsa Flapper, 2 mi.
 - Ol' Hank, 1 mi.
 - Livingston, .68 mi.

Physical Attributes

- Parking
- Boat Ramp
- Picnic Access
- Bridge Crossing
- Trail Access

Experiential Attributes

- Litter Present
- Bank Fishing
- Rock Climbing
- Historic Bridge Crossing
- Historic Structure
- EBird Wildlife Hotspots

Managerial Attributes

- Official Use
- Public Access
- Planned Official Public Access
- Concessions
- Restrooms
- Tent Camping
- RV Hook-ups
- Trash Collection

Accommodations

- Hipcamp/Private Campsites
- AirBnB/Private Lodging
- RV Campgrounds
- Rental Lodging

Archeological Sites

- 1 Site within Boundary
- 2 Sites within Boundary
- 3 Sites within Boundary
- 4 Sites within Boundary
- 5 Sites within Boundary