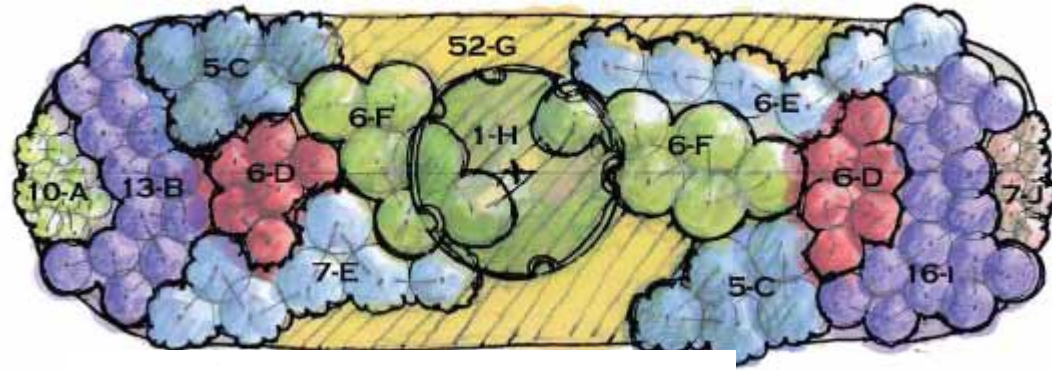


TREES

Common Name	Botanical Name	Planting Zone	Height	Bloom Time	Bloom Color
Allegheny Serviceberry	Amelanchier laevis	Ponding to berm	25'	Apr-May	White
River Birch	Betula nigra	Ponding to middle	50'		
Redbud	Cercis canadensis	Middle to berm	15'	April-May	Pink

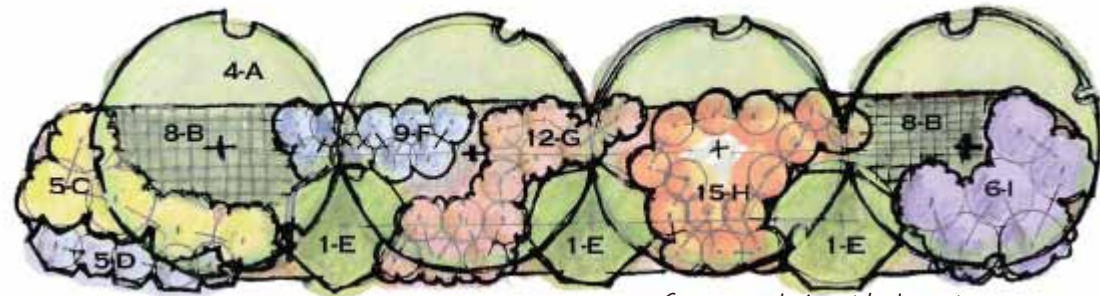
TEMPLATES

Use these examples to help you design a rain garden!



Source: www.lowimpactdevelopment.org

- A - *Chelone glabra* (White Turtlehead), 12" o.c.
- B - *Iris versicolor* (Blue Flag), 18" o.c.
- C - *Amsonia tabernaemontana* (Blue-Star Flower), 2' o.c.
- D - *Lobelia cardinalis* (Cardinal Flower), 18" o.c.
- E - *Amsonia hubrechtii* (Narrow-leaf Blue Star Flower), 2' o.c.
- F - *Thelypteris palustris* (Marsh Fern), 2' o.c.
- G - *Oenothera fruticosa* (Narrow-leaved Sundrops), 12" o.c.
- H - *Ilex decidua* (Possumhaw)*
- I - *Aster novae-angliae* 'Purple Dome' (New England Aster), 18" o.c.
- J - *Chelone lyonii* (Pink Turtlehead), 12" o.c.



Source: www.lowimpactdevelopment.org

- A - *Sassafras albidum* (Sassafras) or *Acer rubrum* (Red Maple), 18' o.c.
- B - *Osmunda cinnamomea* (Cinnamon Fern), 2' o.c.
- C - *Viburnum acerfolium* (Mapleleaf viburnum), 3' o.c.* , 5' o.c.
- D - *Itea virginiana* 'Henry's Garnet', 3' o.c.
- E - *Amelanchier canadensis* (Shadblow) or *Cornus alternifolia* (Alternate-leaf dogwood), 18" o.c.
- F - *Pieris floribunda* (Mountain Pieris), 5' o.c.
- G - *Clethra alnifolia* 'Ruby Spice', 3' o.c.
- H - *Calycanthus floridus* (Sweetshrub), 4' o.c.
- I - *Rhododendron canescens* (Piedmont Azalea) or *Rhododendron vaseyi* (Pinkshell azalea), 5' o.c.

MORE INFORMATION

CONTACT: Becky Roark, Rain Garden Resource Specialist
 EMAIL: beckyroark@irwp.org
 PHONE: 479-215-6623
 WEBSITE: www.irwp.org

RESOURCES:

www.plants.usda.gov
www.anps.org
www.plantnative.org

Native Plants for a Rain Garden



WHY PLANT NATIVE?

Native vegetation, which can include grasses, forbes (wildflowers), shrubs and trees are an excellent way to enhance the ecological services that a rain garden provides.

They have adapted to our area to survive a wide range of conditions ranging from hot and dry to moist and boggy. Densely rooted native plants capture, filter, store and slowly release stormwater. They also trap and use nutrients such as nitrates and phosphates that otherwise would become run off and pollute nearby streams.

Native plants also attract important pollinators to our area such as bees, butterflies and hummingbirds and provide habitat for local species!


 rain garden project


 ILLINOIS River
 WATERSHED PARTNERSHIP

www.irwp.org



Beaver Water District

www.bwdh2o.org

Right Plant for the Right Place

There are typically three wetness zones in a rain garden:

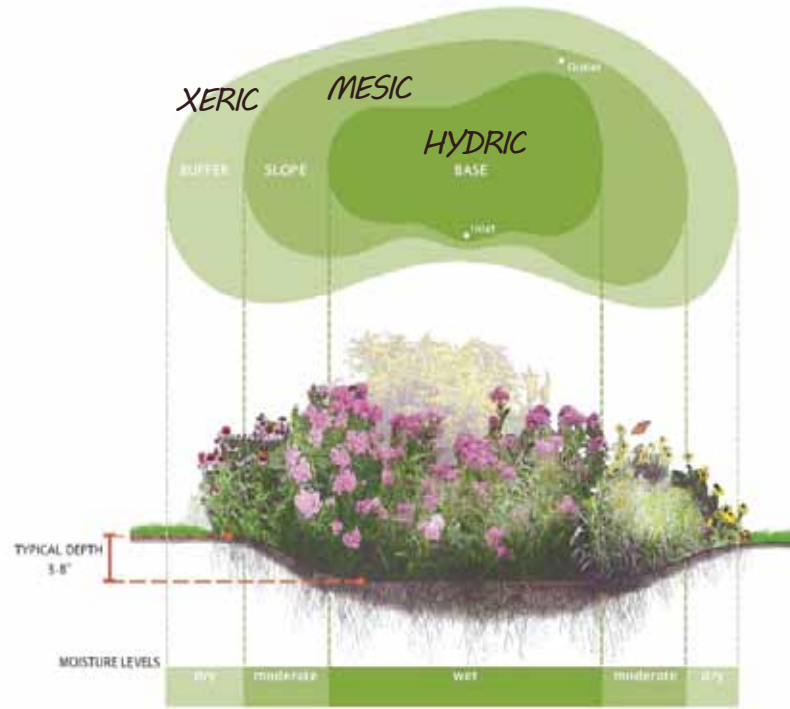
HYDRIC: Wet, plants periodically or often are inundated by water.

MESIC: Moist, adequate soil moisture retention.

XERIC: Dry and drought resistant, little moisture retention, excessively drained.

Note the plant characteristics that indicate if the plant species will endure inundation for at least 24-48 hours and place those species in the hydric zone. Species that like a medium to dry moisture should be placed in the MESIC zone. Species that prefer dry soils and are highly drought tolerant should be placed in the XERIC zone. The berm will also be a part of the XERIC zone.

Source: water.rutgers.org



GRASSES & SEDGES

Common Name	Botanical Name	Planting Zone	Height	Bloom Time	Bloom Color
Little Bluestem	Andropogon scoparius	Middle to berm	3'		
Side-oats Grama	Bouteloua curtipendula	Middle to berm	2'		
Common Bur Sedge	Carex grayi	Ponding to middle	3'		
Common Fox Sedge	Carex stipata	Ponding to middle	3'		
Common Tussock Sedge	Carex stricta	Ponding	3'		
Common Cattail Sedge	Carex typhina	Ponding	1'		
Common Rush	Juncus effusus	Ponding to middle	2'		
Switchgrass	Panicum virgatum	Ponding to middle	3'		
Indian Grass	Sorghastrum nutans	Middle to berm	6'		
Prairie Dropseed	Sporobolus heterolepis	Middle to berm	3'		

SHRUBS

Common Name	Botanical Name	Planting Zone	Height	Bloom Time	Bloom Color
False Indigo	Amorpha fruticosa	Ponding to high	12'	Jun-Aug	Purple
New Jersey Tea	Ceanothus americanus	Middle to berm	3'	Jun-Aug	White
Buttonbush	Cephalanthus occidentalis	Ponding	15'	Jun-Aug	White
Red Osier Dogwood	Cornus stolonifera	Ponding to middle	10'	Jun-Sep	White
Ozark Witch Hazel	Hammamelis vernalis	Middle to berm	10'	Jan-April	Yellow
Inkberry	Illex glabra	Middle to berm	3-4'	Evergreen	Green
Winterberry Holly	Illex verticillata	Ponding to berm	6-8'	May-Jun	White
Yaupon	Ilex vomitoria	Middle to berm	15'	Evergreen	
Prairie Ninebark	Physocarpus opulifolius	Ponding to high	8'	Jul	White
Arrowwood Viburnum	Viburnum dentatum	Ponding to high	16'	Jun-Aug	White
Blackhaw	Viburnum prunifolium	Ponding to high	16'	May-Jun	Cream
American Cranberry Bush	Viburnum trilobum	Ponding to middle	12'	May-Jun	White

WILDFLOWERS (FORBES)

Common Name	Botanical Name	Planting Zone	Height	Bloom Time	Bloom Color
Sweet Flag	Acorus calamus	Ponding to middle	2'	May-Jul	Green
Yellow Giant Hyssop	Agastache nepetoides	Ponding to high	6'	Jul-Oct	Cream
Arkansas Blue Star	Amsonia	Middle to berm	4'	April-May	Blue
New England Aster	Aster novae-angliae	Ponding to middle	6'	Aug-Oct	Purple
Wild columbine	Aquilegia canadensis	Middle to berm	8-24"	May-Jun	Red & yellow
Swamp milkweed	Asclepias incarnata	Ponding to middle	2-4'	Jul-Sep	Pink-red
Butterfly milkweed	Asclepias tuberosa	High	1.5-3'	Jul-Aug	Orange
Stiff Aster	Aster linariifolius	High to berm	1'	Aug-Oct	Purple
Purple Poppy Mallow	Callirhoe involucrata	High to berm	6"	Jun-Aug	Purple
Wild Hyacinth	Camassia scilloides	Ponding to high	2'	May-Jun	White
Tickseed	Coreopsis verticillata	Middle to berm	18"	Summer	Yellow
Swamp Loosestrife	Decodon verticillatus	Ponding	2'	June-Sept	Pink
Wild Blue Larkspur	Delphinium carolinianum	Middle to high	4'	May-Jun	Blue
Midland Shooting Star	Dodecatheon meadia	Ponding to high	1'	Apr-Jun	Pink
Narrow-leaved Coneflower	Echinacea angustifolia	High	2'	Jun-Jul	Pink
Purple Coneflower	Echinacea purpurea	Ponding to high	4'	Jul-Sep	Purple
Robin's Plantain	Erigeron pulchellus	High to berm	1'	May-Jun	White
Rattlesnake Master	Eryngium yuccifolium	Ponding to high	4'	Jul-Sep	White
Joe Pye weed	Eupatorium fistulosum	Ponding to middle	To 6'	Summer	Pink-Purple
Boneset	Eupatorium perfoliatum	Ponding	4'	Jul-Sep	White-Pink
Rose Mallow	Hibiscus militaris (laevis)	Ponding	5'	Jul-Sep	Pink
Dwarf Crested Iris	Iris cristata	Ponding to high	8"	May	Purple
Prairie Blazing Star	Liatris pycnostachya	Middle to berm	3-4'	July-Oct	Purple
Cardinal flower	Lobelia cardinalis	Ponding	4'	Jul-Sep	Scarlet
Great blue lobelia	Lobelia siphilitica	Middle to high	3-4'	Aug-Sep	Blue
Fringed Loosestrife	Lysimachia ciliata	Ponding to middle	2'	Jun-Aug	Yellow
Virginia bluebell	Mertensia virginica	Ponding to middle	2'	Apr-May	Blue
Wild Bergamot	Monarda fistulosa	Ponding to high	4'	Jul-Sep	Purple
Wood Betony	Pedicularis canadensis	Ponding to berm	1'	Apr-May	Yellow
Foxglove Beardtongue	Penstemon digitalis	Ponding to middle	2-3'	Jun-Jul	White
Wild Blue Phlox	Phlox divaricata	Ponding to berm	1'	Apr-Jun	Blue
Garden Phlox	Phlox paniculata	Ponding to middle	4'	Jul-Sep	Pink
Obedient Plant	Physostegia virginiana	Ponding to middle	4'	Aug-Sep	Pink
Yellow Coneflower	Ratibida pinnata	Ponding to middle	3-6'	Summer	Yellow
Black-eyed Susan	Rudbeckia hirta	Middle to berm	2'	Jul-Sep	Yellow
Thin-leaved Coneflower	Rudbeckia triloba	Middle to high	3'	Aug-Sep	Yellow
Blue Sage	Salvia azurea	Middle to high	3'	Aug-Sep	Blue
Mad-dog Skullcap	Scutellaria lateriflora	Ponding	2'	Jul-Sep	Blue
Starry Campion	Silene stellata	Ponding to high	3'	Jul-Oct	White
Stiff Goldenrod	Solidago rigida	Ponding to high	4'	Aug-Oct	Yellow
Ohio Spiderwort	Tradescantia ohiensis	Ponding to berm	3'	May-Jul	Blue
Spiderwort	Tradescantia virginica	Middle	3'	Apr-Jul	Purplish blue
Blue Vervain	Verbena hastata	Ponding	5'	Jul-Sep	Blue
Ironweed	Vernonia sp.	Ponding to middle	5'	Aug-Oct	Purple

FERNS

Common Name	Botanical Name	Planting Zone	Height	Bloom Time	Bloom Color
Lady Fern	Athyrium filix-femina	Ponding to middle	1'		
Sensitive Fern	Onoclea sensibilis	Ponding	1'		