

Walmart ISD and Illinois River Watershed Partnership Horsebarn Trail Rain Garden Sustainability and Maintenance Plan

Rain gardens are not completely maintenance-free. After our rain garden is planted and established, we may never need to water it or add any type of fertilizer or pesticide. It is important, however, when first established to check on young plants frequently. Maintenance then consists of weeding, clean-up and re-mulching the garden in the early Spring and Fall.

2010: First Season Care

The most important work during the first year of our rain garden is watering and weeding. A young garden will need about an inch of water per week until it is established.

Weeding & Mulching

All rain gardens need constant weeding and replenishing of mulch. As the garden matures, weeds will be pushed out by the growing plants. The mulch will need to be raked periodically and replenished or freshened next Spring and each Spring after that.

Seasonal Clean-Up

In the Spring, we'll also need to clean-up our rain garden by removing any dead material and replenishing the mulch. In the Fall it's important we remove some of the dead vegetation. We might wish to leave some of the material and seed bearing plants for bird habitat in the winter however.

Education

A volunteer education team will conduct an annual Rain Garden Academy to educate, motivate and assist individuals, schools, businesses, civic groups and others to establish rain gardens across the Illinois River Watershed.

All About Rain Gardens

Building a rain garden is one of the easiest and most cost efficient things we can do to manage wet weather and reduce our contribution to stormwater pollution.

By capturing clean rainwater from your roof, driveway and sidewalks and diverting it into a great looking rain garden where it can **slowly soak into the ground, filter contaminants** and **keep quantities of clean water from going down the sewer system** you'll have a great looking garden that puts water in its place.

A rain garden can mimic the natural absorption and pollutant removal activities of a forest, or a meadow or a prairie and can absorb runoff more efficiently, sometimes as much as 30% - 40% more than a standard lawn. Capturing rainwater in a rain garden, holding the water for a short time and then slowly releasing it into the soil can reduce the rush of a large storm – quickly, neatly and naturally.

Because rain gardens are dug 4" to 8" deep, and in some cases 1' - 2' deep, they hold larger quantities of rainwater making their overall construction more cost efficient than other green alternatives. Rain gardens also need less technical experience to install and can be installed without permits or heavy equipment.

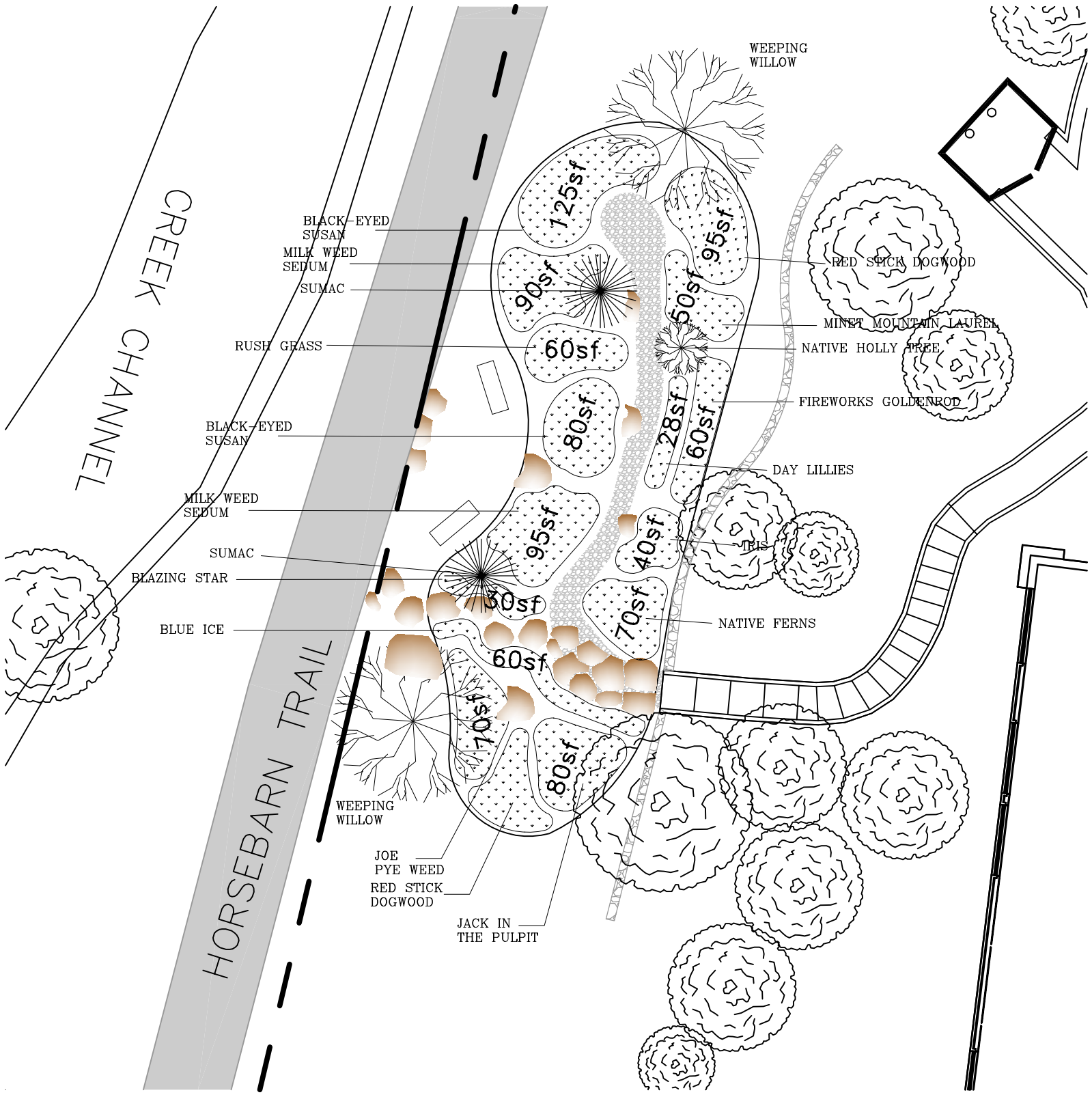
Rain gardens are one very good option that helps to lower the impact of impervious surfaces and polluted runoff because they are low-tech, inexpensive, sustainable and esthetically beautiful.



JOIN US FRIDAYS from 1 – 5 pm, APRIL 16TH AND/ OR APRIL 23RD TO HELP BUILD

THE WALMART ISD – ILLINOIS RIVER WATERSHED PARTNERSHIP RAIN GARDEN TEAM

SIGN-UP AT CONTACT@IRWP.ORG



CREEK CHANNEL

HORSEBARN TRAIL

BLACK-EYED
SUSAN
MILK WEED
SEDUM
SUMAC

RUSH GRASS

BLACK-EYED
SUSAN

MILK WEED
SEDUM

SUMAC

BLAZING STAR

BLUE ICE

WEEPING
WILLOW

JOE
PYE WEED
RED STICK
DOGWOOD

JACK IN
THE PULPIT

WEEPING
WILLOW

RED STICK DOGWOOD

MINNET MOUNTAIN LAUREL

NATIVE HOLLY TREE

FIREWORKS GOLDENROD

DAY LILLIES

NATIVE FERNS

125sf

90sf

60sf

80sf

95sf

60sf

60sf

70sf

80sf

95sf

50sf

60sf

40sf

70sf

80sf

80sf

80sf

80sf

80sf

80sf

80sf